

PE4703L1Q ~ PE4748L1Q Series

Hi-Surge ESD Protection

Voltage 3.3~48 V

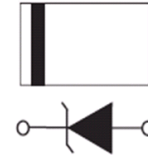
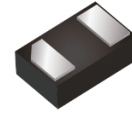
Features

- IEC61000-4-2(ESD) : ±30kV Air, ±30kV Contact
- IEC61000-4-4(EFT) : 40A(5/50ns)
- IEC61000-4-5(Lightning) : 19A ~ 100A(8/20uS)
- Low clamping voltage
- Lead free in compliance with EU RoHS 2.0
- Green molding compound as per IEC 61249 standard

Mechanical Data

- Case : DFN1610-2L Package
- Terminals : Solderable per MIL-STD-750, Method 2026
- Approx. Weight : 0.0024 grams

DFN1610-2L



Maximum Ratings and Thermal Characteristics (T_A = 25°C unless otherwise noted)

PARAMETER	SYMBOL	LIMIT	UNITS
ESD IEC61000-4-2(Air)	V _{ESD}	±30	kV
ESD IEC61000-4-2(Contact)		±30	
Typical Thermal Resistance ^(Note 1)	R _{θJA}	300	°C/W
Operating Junction Temperature Range	T _J	-55~150	°C
Storage Temperature Range	T _{STG}	-55~150	°C

PE4703L1Q ~ PE4748L1Q Series

Electrical Characteristics (T_A = 25°C unless otherwise noted)

PE4703L1Q						
PARAMETER	SYMBOL	TEST CONDITION	MIN.	TYP.	MAX.	UNITS
Reverse Stand-Off Voltage ^(Note 2)	V _{RWM}	-	-	-	3.3	V
Maximum Peak Pulse Current	I _{PP}	t _P = 8/20us	-	-	110	A
Reverse Breakdown Voltage	V _{BR}	I _{BT} = 1mA	4	-	6.5	V
Reverse Leakage Current	I _R	V _R = 3.3V	-	-	3	uA
Clamping Voltage	V _{CL}	I _{PP} = 1A, t _P = 8/20us	-	-	8	V
		I _{PP} = 110A, t _P = 8/20us	-	-	12.7	V
Off State Junction Capacitance	C _J	0Vdc Bias f = 1MHz	-	-	1500	pF

PE4705L1Q						
PARAMETER	SYMBOL	TEST CONDITION	MIN.	TYP.	MAX.	UNITS
Reverse Stand-Off Voltage ^(Note 2)	V _{RWM}	-	-	-	5	V
Maximum Peak Pulse Current	I _{PP}	t _P = 8/20us	-	-	100	A
Reverse Breakdown Voltage	V _{BR}	I _{BT} = 1mA	5.5	-	9	V
Reverse Leakage Current	I _R	V _R = 5V	-	-	3	uA
Clamping Voltage	V _{CL}	I _{PP} = 1A, t _P = 8/20us	-	-	9	V
		I _{PP} = 100A, t _P = 8/20us	-	-	14.5	V
Off State Junction Capacitance	C _J	0Vdc Bias f = 1MHz	-	-	1300	pF

PE4707L1Q						
PARAMETER	SYMBOL	TEST CONDITION	MIN.	TYP.	MAX.	UNITS
Reverse Stand-Off Voltage ^(Note 2)	V _{RWM}	-	-	-	7	V
Maximum Peak Pulse Current	I _{PP}	t _P = 8/20us	-	-	88	A
Reverse Breakdown Voltage	V _{BR}	I _{BT} = 1mA	7.7	-	9.5	V
Reverse Leakage Current	I _R	V _R = 7V	-	-	1	uA
Clamping Voltage	V _{CL}	I _{PP} = 1A, t _P = 8/20us	-	-	10.5	V
		I _{PP} = 88A, t _P = 8/20us	-	-	16.5	V
Off State Junction Capacitance	C _J	0Vdc Bias f = 1MHz	-	-	960	pF

PE4703L1Q ~ PE4748L1Q Series

PE4709L1Q

PARAMETER	SYMBOL	TEST CONDITION	MIN.	TYP.	MAX.	UNITS
Reverse Stand-Off Voltage ^(Note 2)	V _{RWM}	-	-	-	9	V
Maximum Peak Pulse Current	I _{PP}	t _P = 8/20us	-	-	73	A
Reverse Breakdown Voltage	V _{BR}	I _{BT} = 1mA	9.9	-	12	V
Reverse Leakage Current	I _R	V _R = 9V	-	-	1	uA
Clamping Voltage	V _{CL}	I _{PP} = 1A, t _P = 8/20us	-	-	13.5	V
		I _{PP} = 73A, t _P = 8/20us	-	-	20	V
Off State Junction Capacitance	C _J	0Vdc Bias f = 1MHz	-	-	700	pF

PE4712L1Q

PARAMETER	SYMBOL	TEST CONDITION	MIN.	TYP.	MAX.	UNITS
Reverse Stand-Off Voltage ^(Note 2)	V _{RWM}	-	-	-	12	V
Maximum Peak Pulse Current	I _{PP}	t _P = 8/20us	-	-	58	A
Reverse Breakdown Voltage	V _{BR}	I _{BT} = 1mA	13.2	-	15.5	V
Reverse Leakage Current	I _R	V _R = 12V	-	-	1	uA
Clamping Voltage	V _{CL}	I _{PP} = 1A, t _P = 8/20us	-	-	18	V
		I _{PP} = 58A, t _P = 8/20us	-	-	27	V
Off State Junction Capacitance	C _J	0Vdc Bias f = 1MHz	-	-	600	pF

PE4715L1Q

PARAMETER	SYMBOL	TEST CONDITION	MIN.	TYP.	MAX.	UNITS
Reverse Stand-Off Voltage ^(Note 2)	V _{RWM}	-	-	-	15	V
Maximum Peak Pulse Current	I _{PP}	t _P = 8/20us	-	-	45	A
Reverse Breakdown Voltage	V _{BR}	I _{BT} = 1mA	16.5	-	20	V
Reverse Leakage Current	I _R	V _R = 15V	-	-	1	uA
Clamping Voltage	V _{CL}	I _{PP} = 1A, t _P = 8/20us	-	-	22.5	V
		I _{PP} = 45A, t _P = 8/20us	-	-	32	V
Off State Junction Capacitance	C _J	0Vdc Bias f = 1MHz	-	-	480	pF

PE4703L1Q ~ PE4748L1Q Series

PE4720L1Q

PARAMETER	SYMBOL	TEST CONDITION	MIN.	TYP.	MAX.	UNITS
Reverse Stand-Off Voltage ^(Note 2)	V_{RWM}	-	-	-	20	V
Maximum Peak Pulse Current	I_{PP}	$t_P = 8/20\mu s$	-	-	34	A
Reverse Breakdown Voltage	V_{BR}	$I_{BT} = 1mA$	22	-	26	V
Reverse Leakage Current	I_R	$V_R = 20V$	-	-	1	μA
Clamping Voltage	V_{CL}	$I_{PP} = 1A, t_P = 8/20\mu s$	-	-	30	V
		$I_{PP} = 34A, t_P = 8/20\mu s$	-	-	43	V
Off State Junction Capacitance	C_J	0Vdc Bias $f = 1MHz$	-	-	310	pF

PE4724L1Q

PARAMETER	SYMBOL	TEST CONDITION	MIN.	TYP.	MAX.	UNITS
Reverse Stand-Off Voltage ^(Note 2)	V_{RWM}	-	-	-	24	V
Maximum Peak Pulse Current	I_{PP}	$t_P = 8/20\mu s$	-	-	32	A
Reverse Breakdown Voltage	V_{BR}	$I_{BT} = 1mA$	26.4	-	31	V
Reverse Leakage Current	I_R	$V_R = 24V$	-	-	1	μA
Clamping Voltage	V_{CL}	$I_{PP} = 1A, t_P = 8/20\mu s$	-	-	35	V
		$I_{PP} = 32A, t_P = 8/20\mu s$	-	-	45	V
Off State Junction Capacitance	C_J	0Vdc Bias $f = 1MHz$	-	-	280	pF

PE4728L1Q

PARAMETER	SYMBOL	TEST CONDITION	MIN.	TYP.	MAX.	UNITS
Reverse Stand-Off Voltage ^(Note 2)	V_{RWM}	-	-	-	28	V
Maximum Peak Pulse Current	I_{PP}	$t_P = 8/20\mu s$	-	-	27.5	A
Reverse Breakdown Voltage	V_{BR}	$I_{BT} = 1mA$	30	-	35.5	V
Reverse Leakage Current	I_R	$V_R = 28V$	-	-	1	μA
Clamping Voltage	V_{CL}	$I_{PP} = 1A, t_P = 8/20\mu s$	-	-	42	V
		$I_{PP} = 27.5A, t_P = 8/20\mu s$	-	-	52	V
Off State Junction Capacitance	C_J	0Vdc Bias $f = 1MHz$	-	-	230	pF

PE4703L1Q ~ PE4748L1Q Series

PE4736L1Q

PARAMETER	SYMBOL	TEST CONDITION	MIN.	TYP.	MAX.	UNITS
Reverse Stand-Off Voltage ^(Note 2)	V_{RWM}	-	-	-	36	V
Maximum Peak Pulse Current	I_{PP}	$t_P = 8/20\mu s$	-	-	19	A
Reverse Breakdown Voltage	V_{BR}	$I_{BT} = 1mA$	39.6	-	46.5	V
Reverse Leakage Current	I_R	$V_R = 36V$	-	-	1	μA
Clamping Voltage	V_{CL}	$I_{PP} = 1A, t_P = 8/20\mu s$	-	-	52.5	V
		$I_{PP} = 19A, t_P = 8/20\mu s$	-	-	75	V
Off State Junction Capacitance	C_J	0Vdc Bias $f = 1MHz$	-	-	190	pF

PE4748L1Q

PARAMETER	SYMBOL	TEST CONDITION	MIN.	TYP.	MAX.	UNITS
Reverse Stand-Off Voltage ^(Note 2)	V_{RWM}	-	-	-	48	V
Maximum Peak Pulse Current	I_{PP}	$t_P = 8/20\mu s$	-	-	15	A
Reverse Breakdown Voltage	V_{BR}	$I_{BT} = 1mA$	52.8	-	62	V
Reverse Leakage Current	I_R	$V_R = 48V$	-	-	1	μA
Clamping Voltage	V_{CL}	$I_{PP} = 1A, t_P = 8/20\mu s$	-	-	69.6	V
		$I_{PP} = 15A, t_P = 8/20\mu s$	-	-	96	V
Off State Junction Capacitance	C_J	0Vdc Bias $f = 1MHz$	-	-	150	pF

NOTES :

1. Mounted on a FR4 PCB, single-sided copper, standard footprint.
2. A transient suppressor is selected according to the working peak reverse voltage(V_{RWM}), which should be equal to or greater than the DC or continuous peak operation voltage level.

PE4703L1Q ~ PE4748L1Q Series

TYPICAL CHARACTERISTIC CURVES

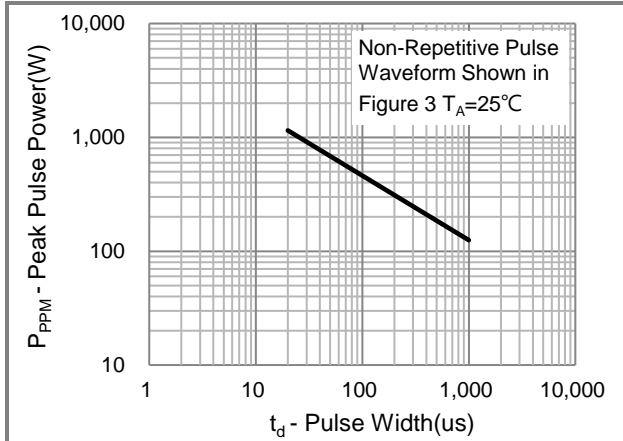


Fig.1 Peak Pulse Power Rating Curve

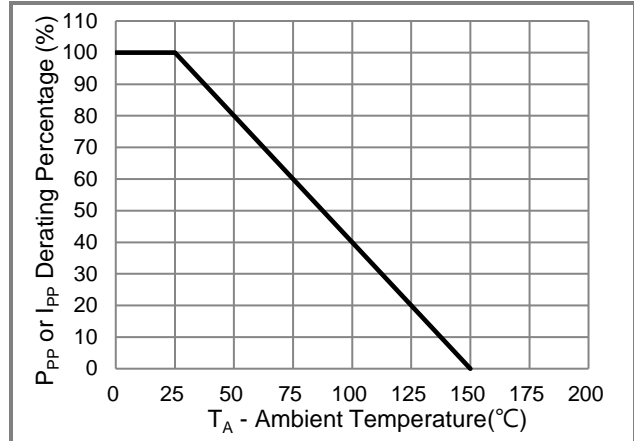


Fig.2 Derating Curve

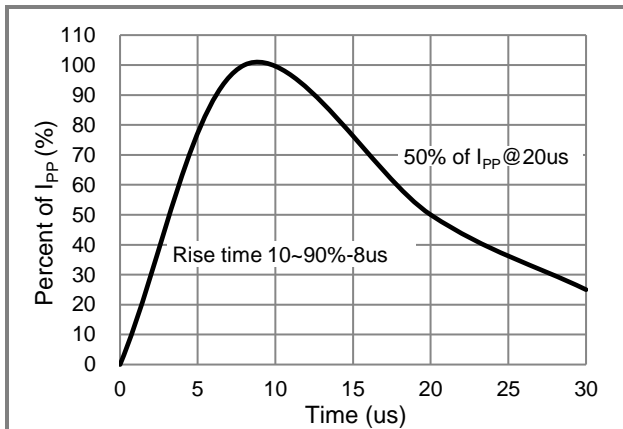


Fig.3 Pulse Waveform

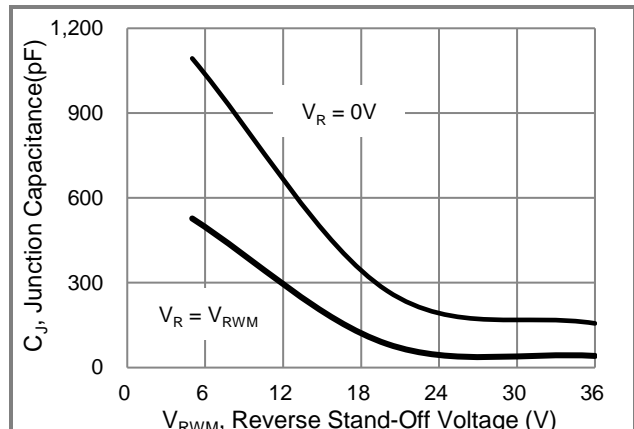


Fig.4 Typical Junction Capacitance

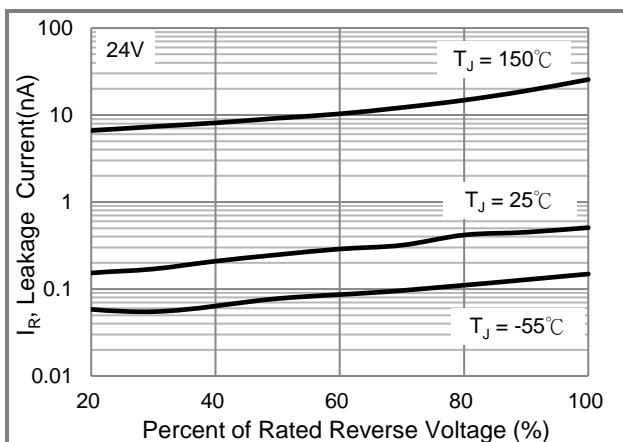


Fig.5 Typical Reverse Characteristics

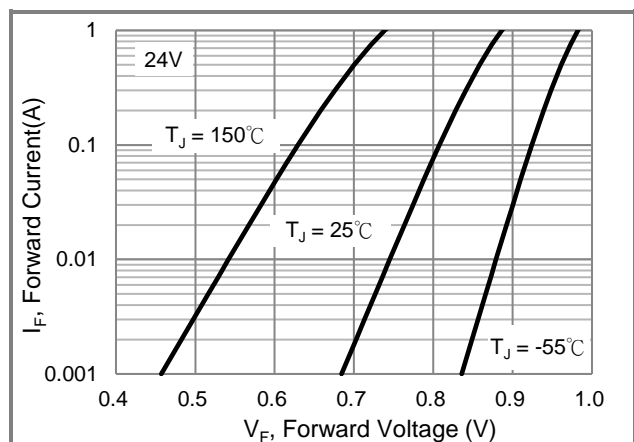


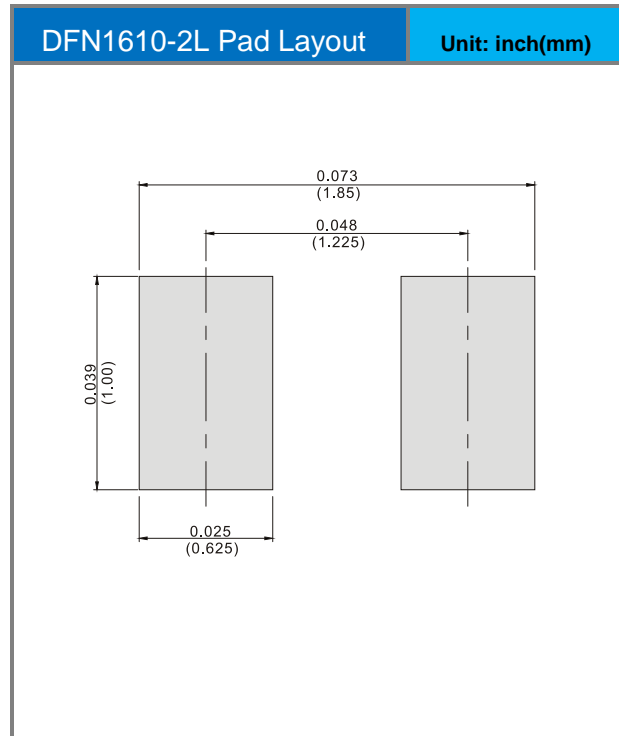
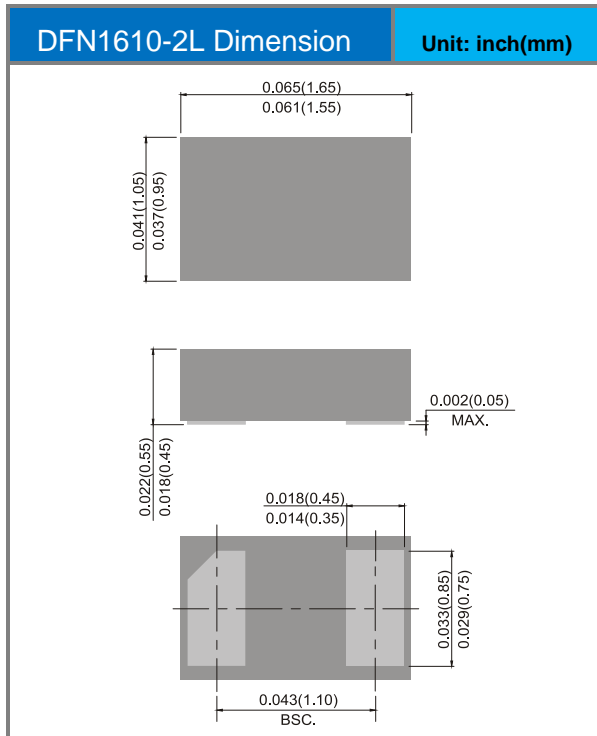
Fig.6 Typical Forward Characteristics

PE4703L1Q ~ PE4748L1Q Series

Product and Packing Information

Part No.	Package Type	Packing Type	Marking
PE4703L1Q	DFN1610-2L	3K pcs / 7" reel	JP
PE4705L1Q	DFN1610-2L	3K pcs / 7" reel	JA
PE4707L1Q	DFN1610-2L	3K pcs / 7" reel	JB
PE4709L1Q	DFN1610-2L	3K pcs / 7" reel	JD
PE4712L1Q	DFN1610-2L	3K pcs / 7" reel	JF
PE4715L1Q	DFN1610-2L	3K pcs / 7" reel	JG
PE4720L1Q	DFN1610-2L	3K pcs / 7" reel	JH
PE4724L1Q	DFN1610-2L	3K pcs / 7" reel	JI
PE4728L1Q	DFN1610-2L	3K pcs / 7" reel	JM
PE4736L1Q	DFN1610-2L	3K pcs / 7" reel	JL
PE4748L1Q	DFN1610-2L	3K pcs / 7" reel	JN

Packaging Information & Mounting Pad Layout



PE4703L1Q ~ PE4748L1Q Series

Disclaimer

- Reproducing and modifying information of the document is prohibited without permission from Panjit International Inc..
- Panjit International Inc. reserves the rights to make changes of the content herein the document anytime without notification. Please refer to our website for the latest document.
- Panjit International Inc. disclaims any and all liability arising out of the application or use of any product including damages incidentally and consequentially occurred.
- Panjit International Inc. does not assume any and all implied warranties, including warranties of fitness for particular purpose, non-infringement and merchantability.
- Applications shown on the herein document are examples of standard use and operation. Customers are responsible in comprehending the suitable use in particular applications. Panjit International Inc. makes no representation or warranty that such applications will be suitable for the specified use without further testing or modification.
- The products shown herein are not designed and authorized for equipments requiring high level of reliability or relating to human life and for any applications concerning life-saving or life-sustaining, such as medical instruments, transportation equipment, aerospace machinery et cetera. Customers using or selling these products for use in such applications do so at their own risk and agree to fully indemnify Panjit International Inc. for any damages resulting from such improper use or sale.
- Since Panjit uses lot number as the tracking base, please provide the lot number for tracking when complaining.